

Liberda  
Antriebstechnik



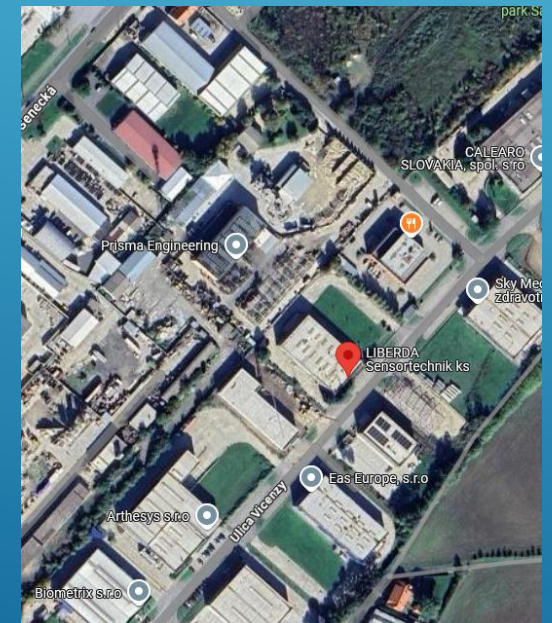
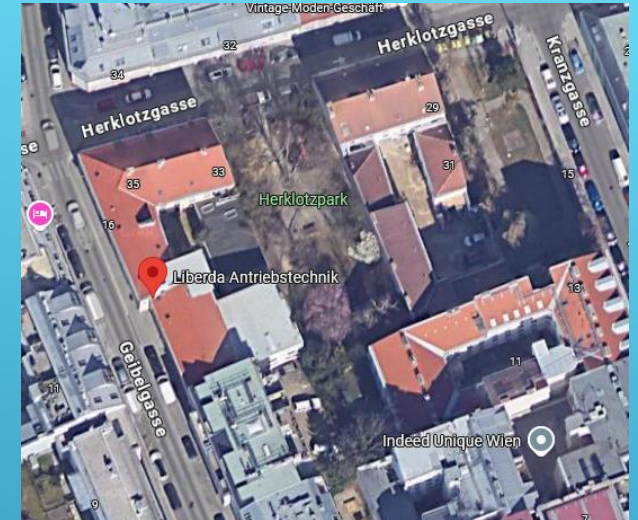
# Company Overview

- In business since 1994 founded by Mr. Viktor Liberda
- ~ 30 employees
- Management:
  - CEO Marko Arzt
  - CFO Romana Schleinzer
- Two affiliated companies in
  - Austria – Liberda Antriebstechnik GmbH
  - Slovakia – Liberda Sensortechnik k.s.
- over 30 years of experience in the field of minimal window and fire door drive systems
- Quality products made in Austria



# Liberda corporate group


- **Vienna**
  - Head Office
  - Production and assembly
  - Research and development
  - mechanical development
  - Quality management
  - Finance department
  - Logistics
- **Šamorín**
  - Electronic production
  - Electronic development
  - Prototype production
  - Electronic repairs

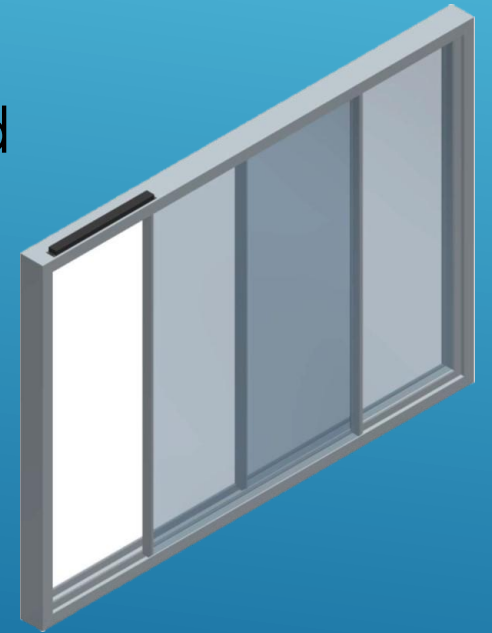




# New Product – Slim Line

- Motor and mechanics are located in the upper profile
- Control unit is installed in the vertical profile

- 
- Space requirement in the upper profile reduced
  - Pulling force up to 180N
  - Mechanics tested for a 30-year service life
  - BLDC drive - door slides easily
  - fits into a rail





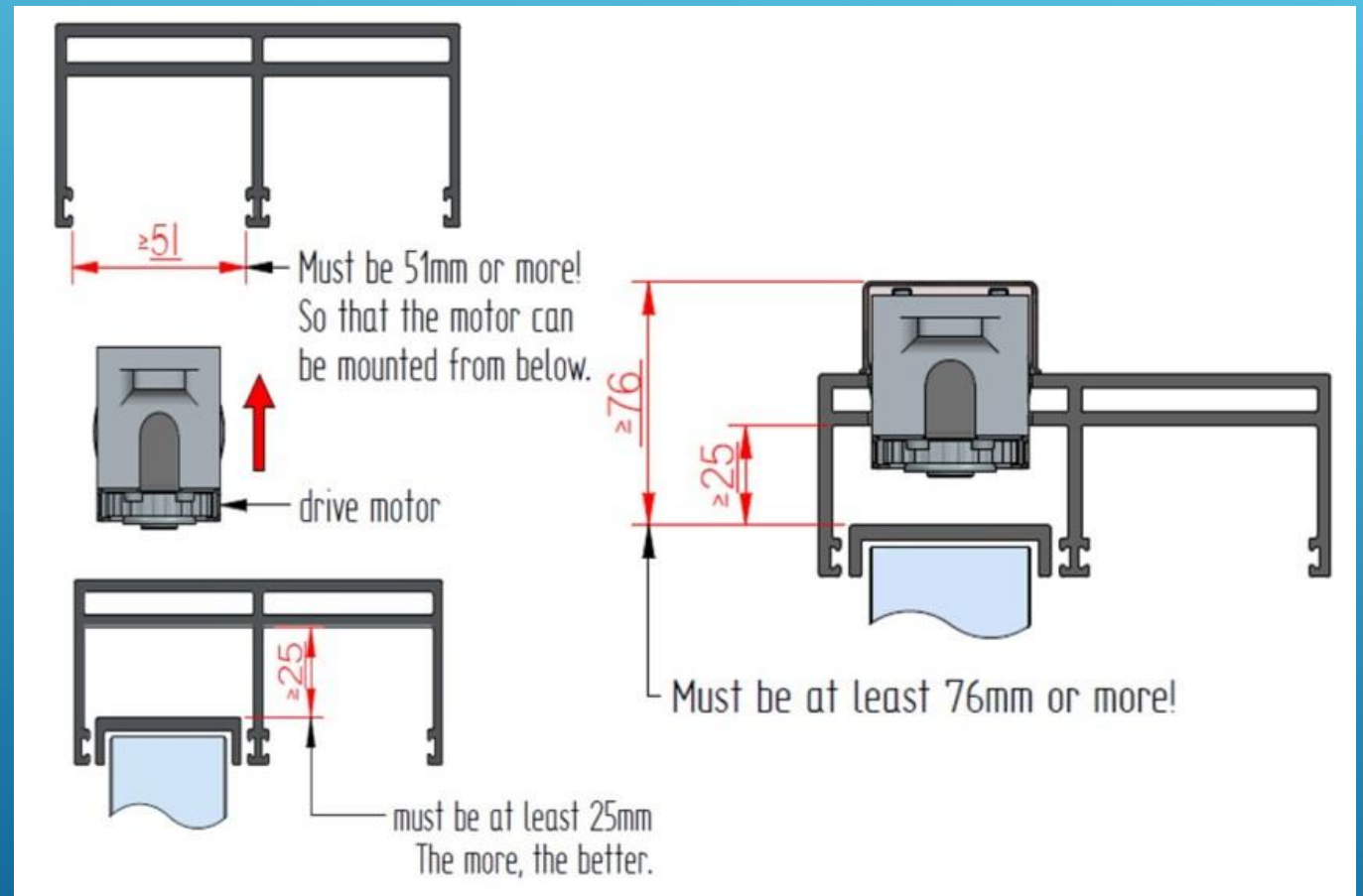
# New Product – Slim Line

- System with vertical toothed belt
- Newly developed V4 control unit
- ideal for single doors with fixed panel or pocket solution
- Universal for left and right opening doors
- Advantage for large quantities - stock keeping
- Wifi integrated



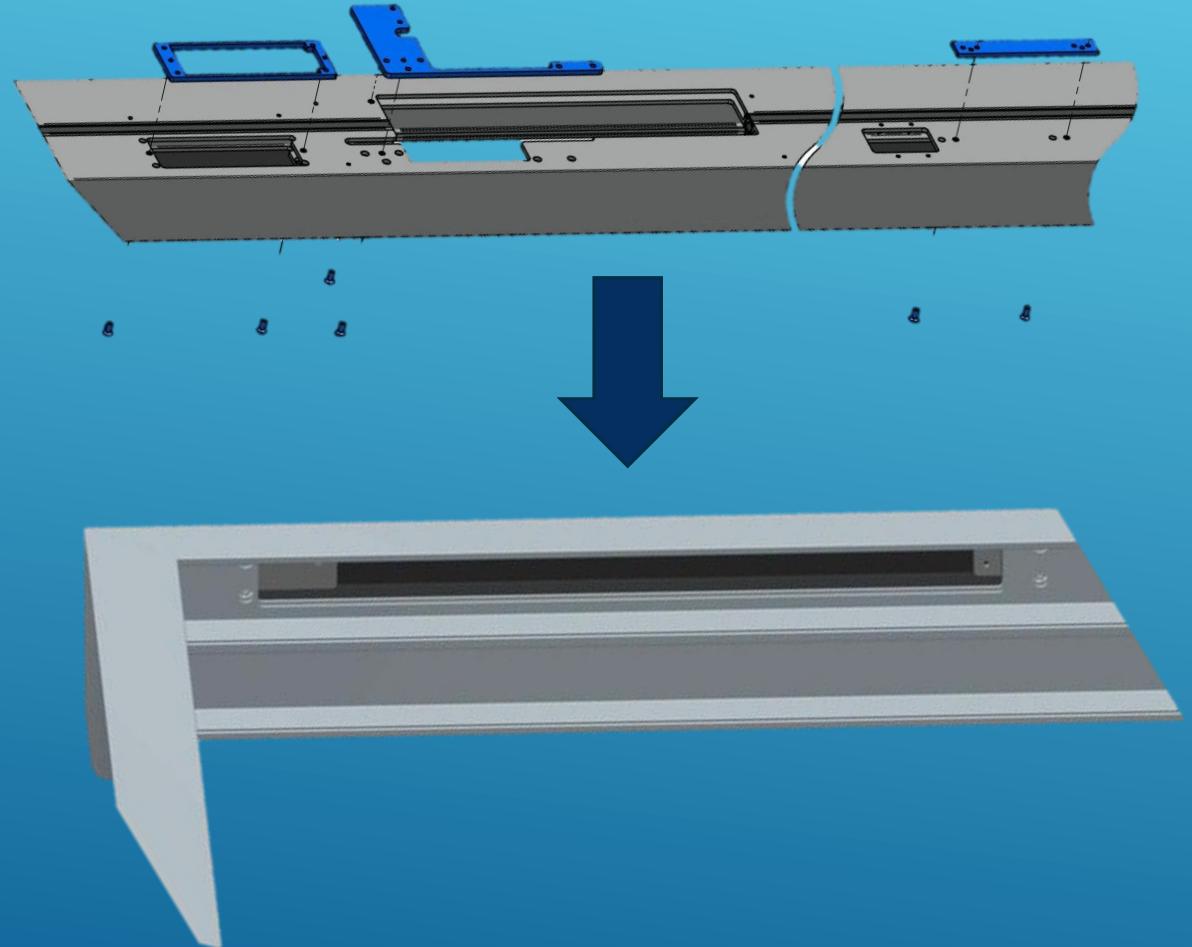
# Slim Line - space requirement

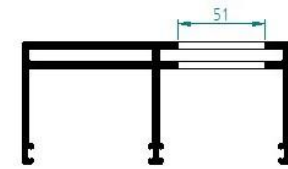
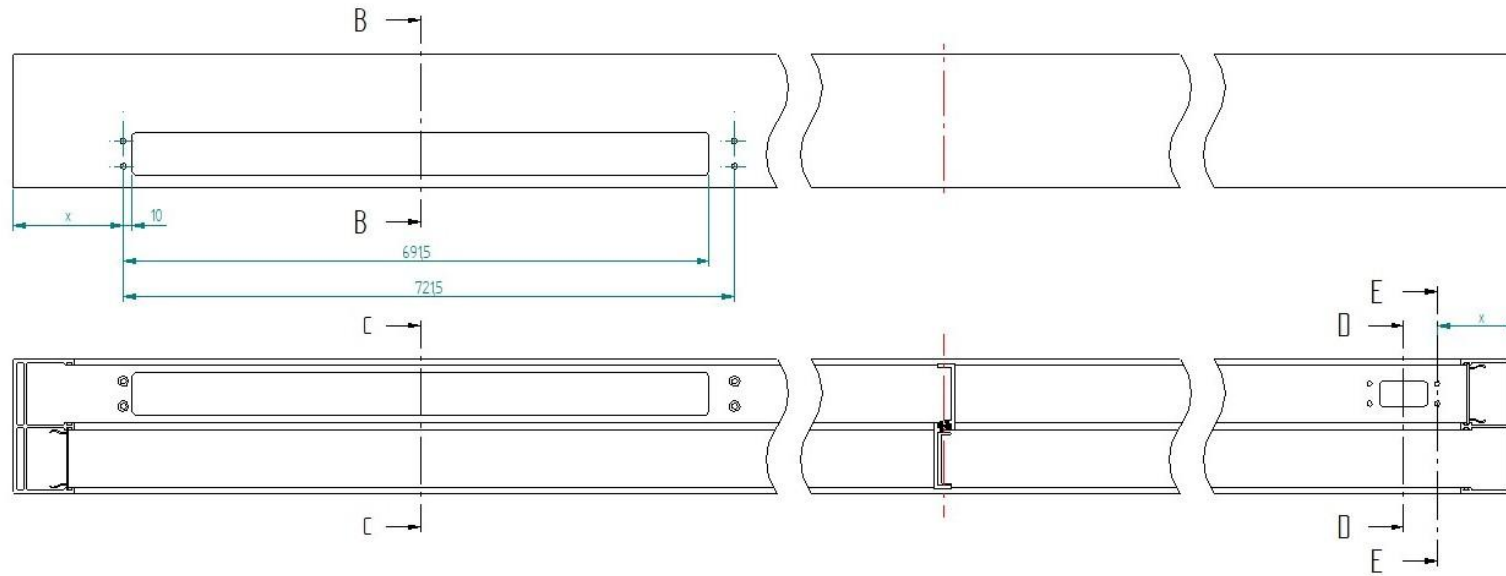
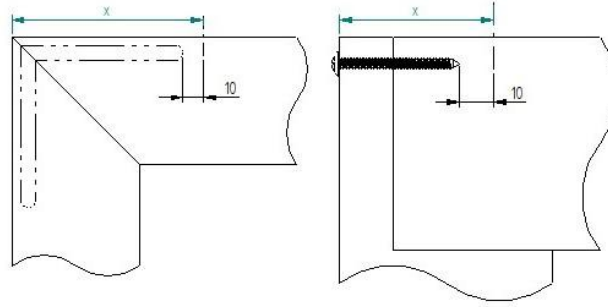
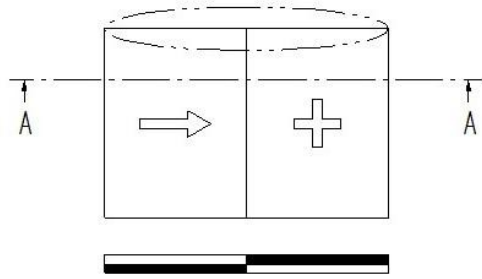
- Height
  - Space requirement from the top edge of the door leaf is reduced from 100 mm to 76 mm
- Width
  - Construction width decreases to 51 mm



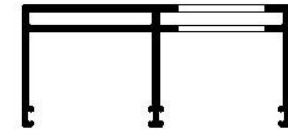
# Comparison milling and drillings

- Comparison to Liberda Classic Line
- Slim Line
- One milling for Drive and Lock instead of two

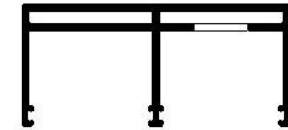




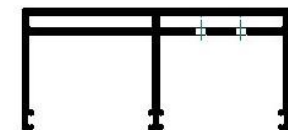
SECTION B-B



SECTION C-C

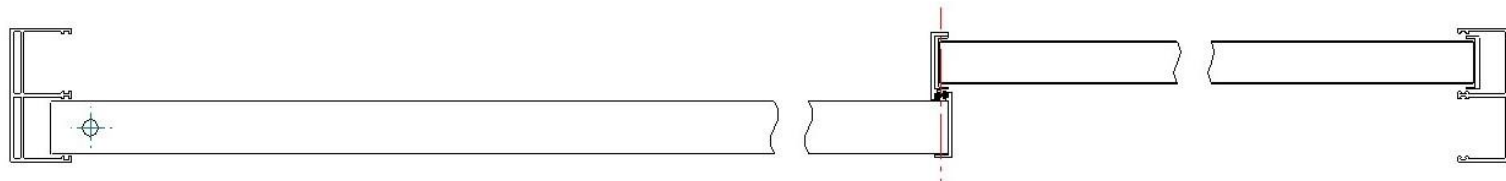


SECTION D-D



SECTION E-E

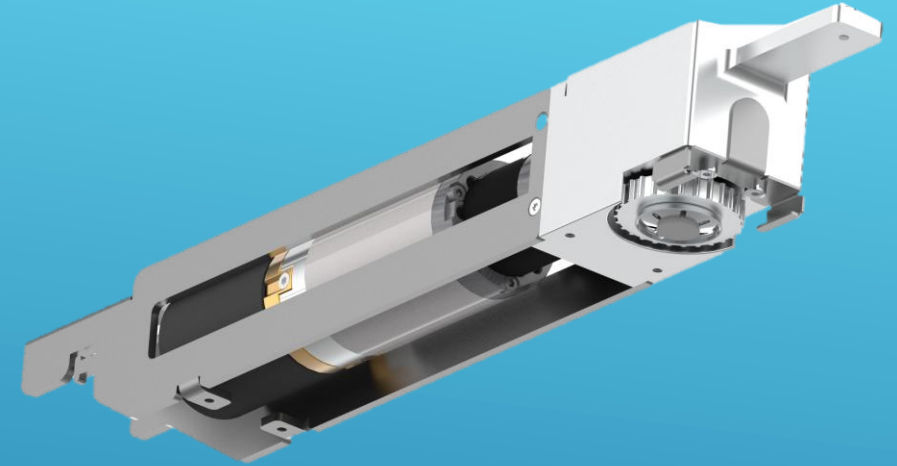
Machining required for installation





# BLDC - Gearmotor

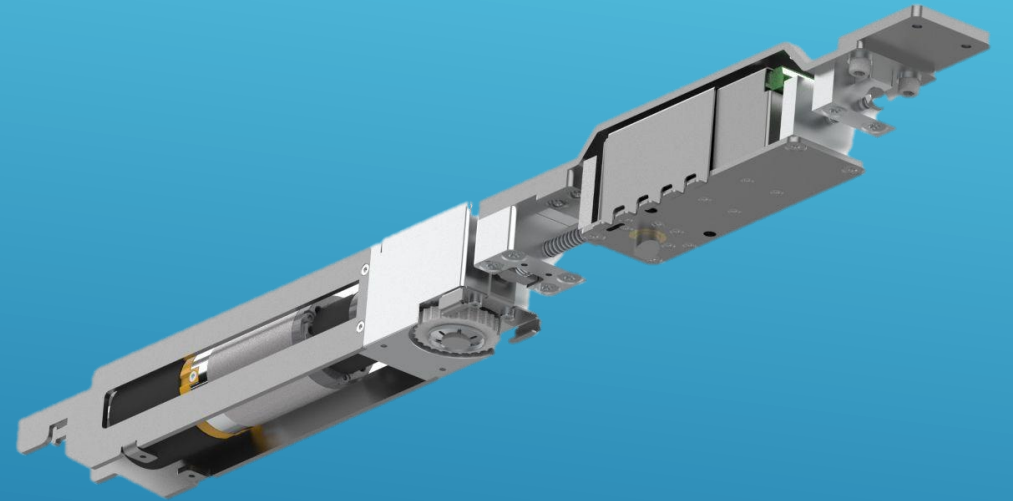
- Compact design
- higher power density
  - Slim Line 400 kg sash weight
  - Classic Line Size 1- 350 kg
- now push able with little strength
- pleasant noise emission
- modular design





# Magnetic lock

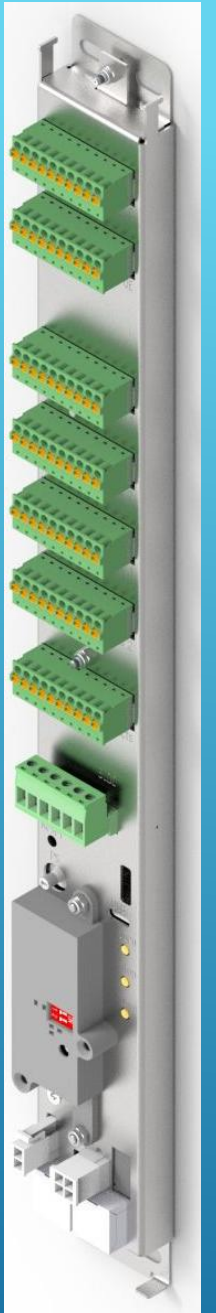
- Magnetic locking integrated in the motor





# Connectivity

- Connectivity
  - as usual, you can still integrate external buttons, home automation or radio remote controls at **no extra cost**
- WIFI
  - our newly developed control system has Wi-Fi on board. This means you can connect your drives to your home network
- App for iOS and Android
- Remote Access
  - through the Wi-Fi interface we can also access your system if you grant us access and carry out troubleshooting or diagnostics

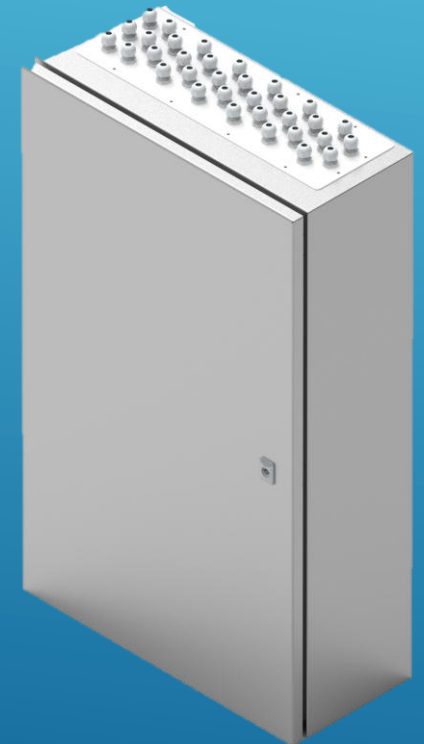
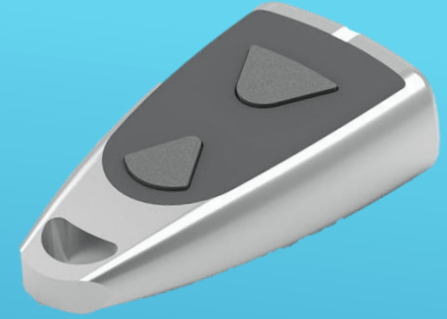
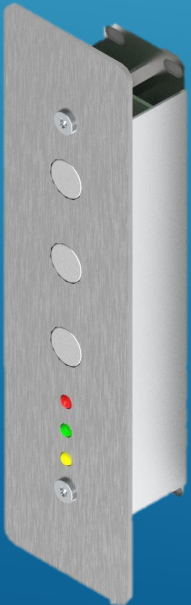




# Accessories

- We offer a wide range of accessories on request  
These include, for example:

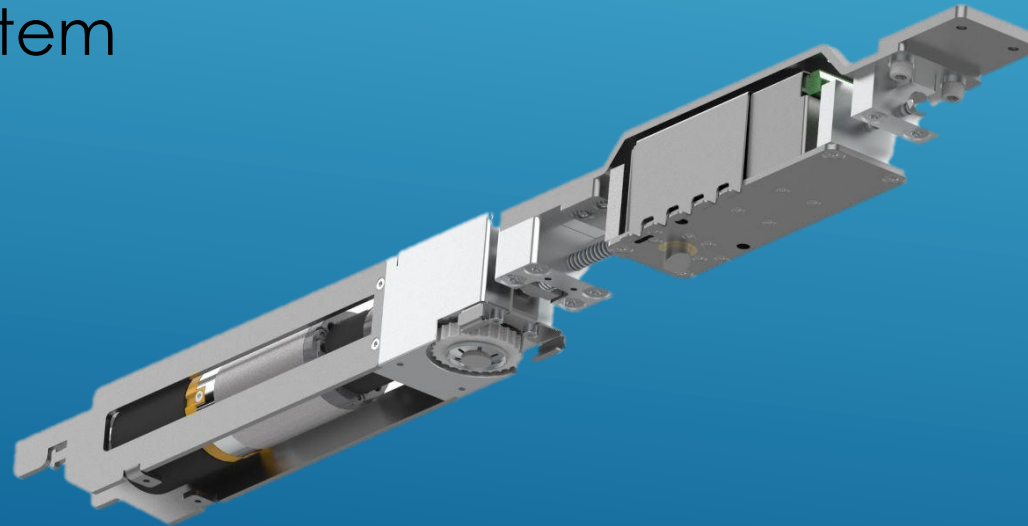
- Operating Elements
- Radio remote controls
- Control cabinets
- Uninterruptible power supplies
  - Mounted in the profile
  - Mounted in the control cabinet





# Competitive Advantages

- Extremely low overall height
- No additional profile required for stowing the drive
- No additional price for home automation module
- Remote diagnostics without workers on site full control remains by the client
- Modular System

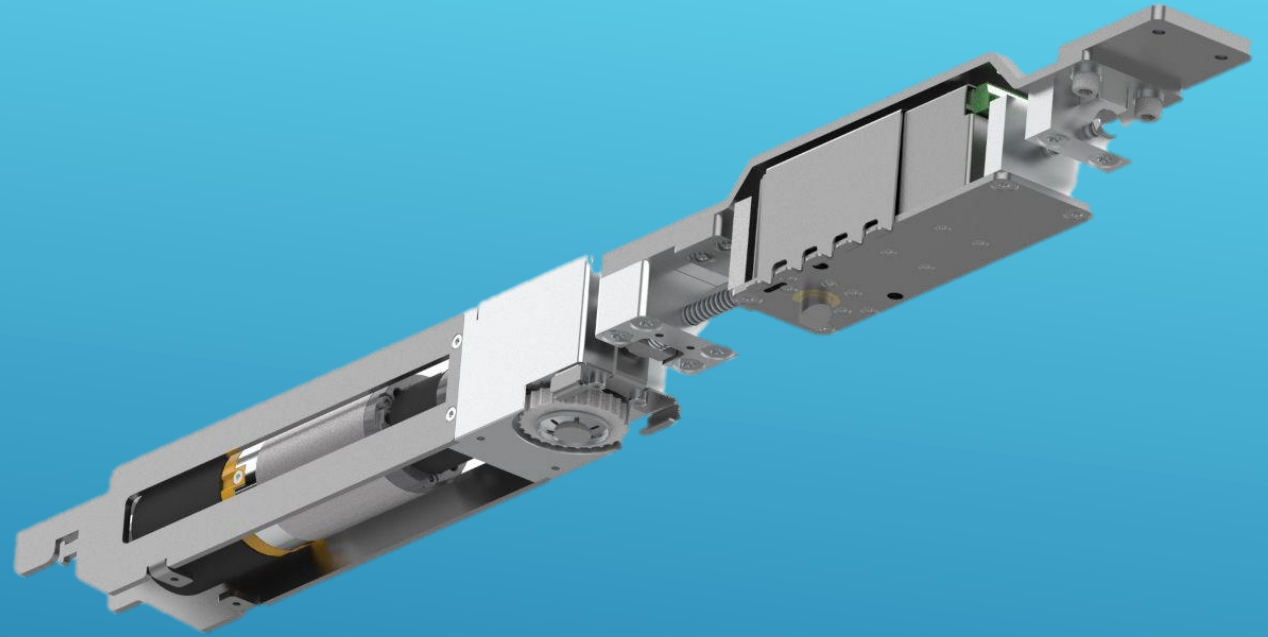




# Contact Liberda

- Technical / Sales
  - [antriebe@liberda.eu](mailto:antriebe@liberda.eu)  
+43 1 895 32 44





Liberda  
Antriebstechnik