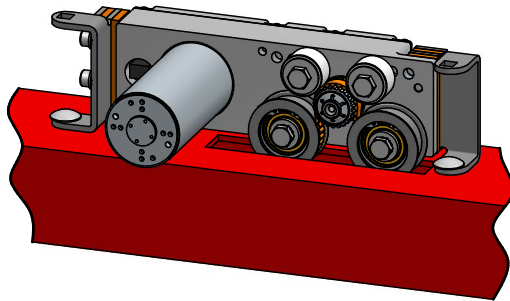
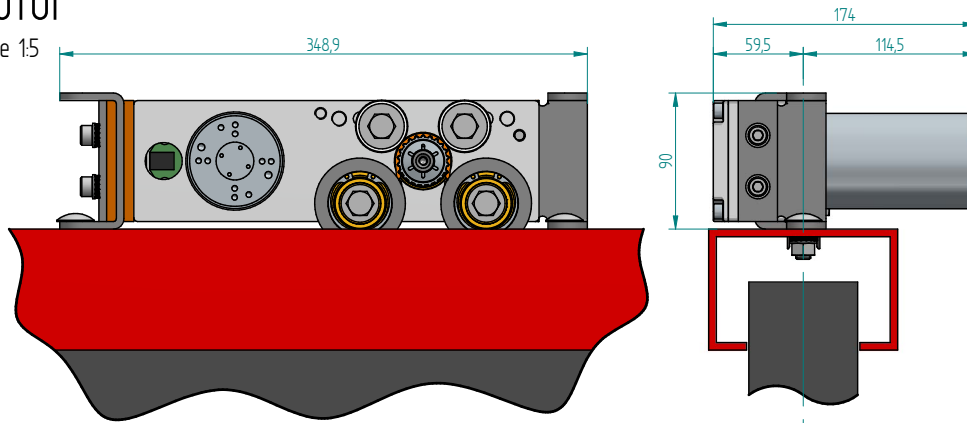


safe - compact - drive  
with redundant control unit  
type: SKA-ARX-0-2

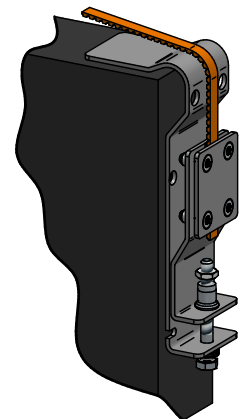
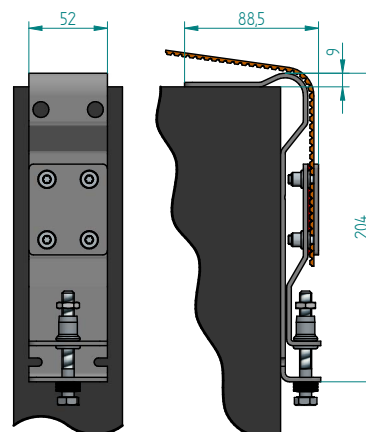
motor

scale 1:5



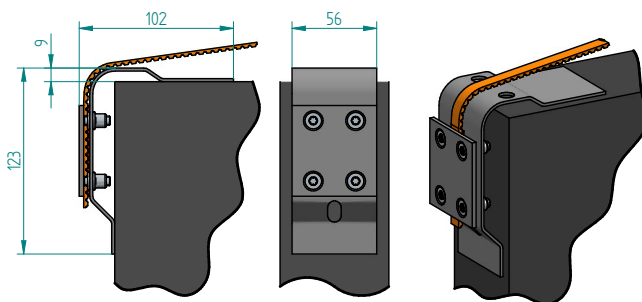
toothbelt - tensioner

scale 1:5



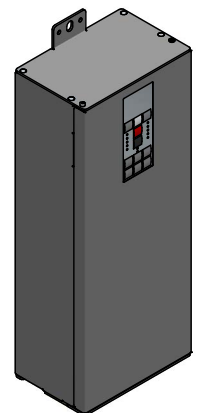
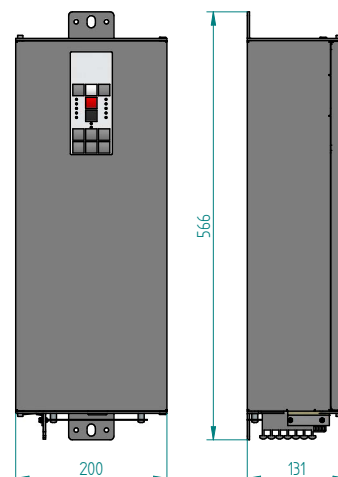
toothbelt - clamp

scale 1:5



control unit

scale 1:10



#### technical data:

type	SKA-ARX-0-2
name of gearbox	VLM
pinion	AT5/22
drive means	toothbelt AT5, maximum tensile load : 700N, 4 - fold break resistance
motor designation	BC13655
voltage	24V
output speed	3300/min
torque	0,27Nm
gearbox producer	Liberda Antriebstechnik
reduction	i = 136,1
maximum torque	9Nm
nominal pull force	400N
speed	8cm/s
The drive has:	sensitivity control, emergency electrical battery

The door can be moved by hand.  
For gate leaf weight max. 1450kg

Liberda Antriebstechnik GmbH  
A-1150 Wien  
Geibelgasse 14-16  
☎ +43 1 8953244  
☎ +43 1 8953244 20  
✉ antriebe@liberda.eu  
www.liberda.eu  
HG Wien FN13227k