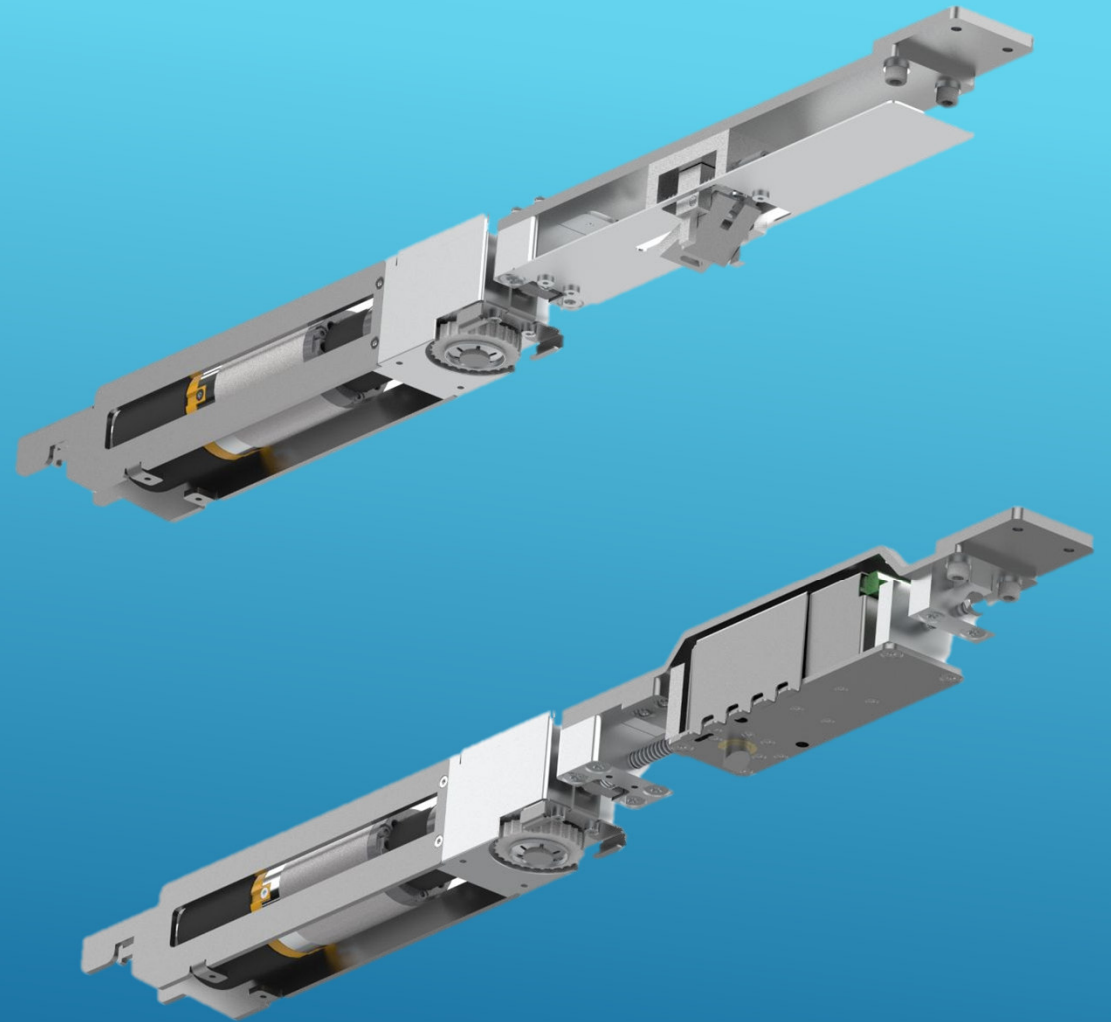




# Liberda Antriebstechnik



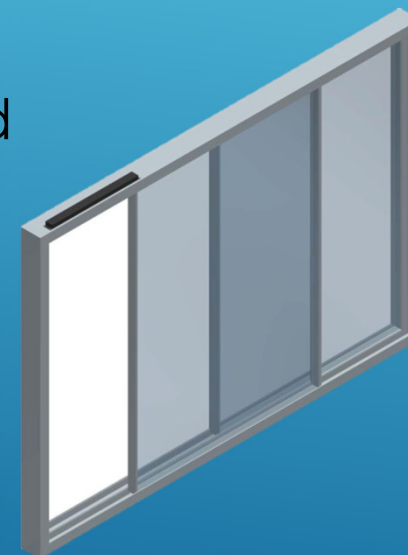


# New Product – Slim Line

- Motor and mechanics are located in the upper profile
- Control unit is installed in the vertical profile



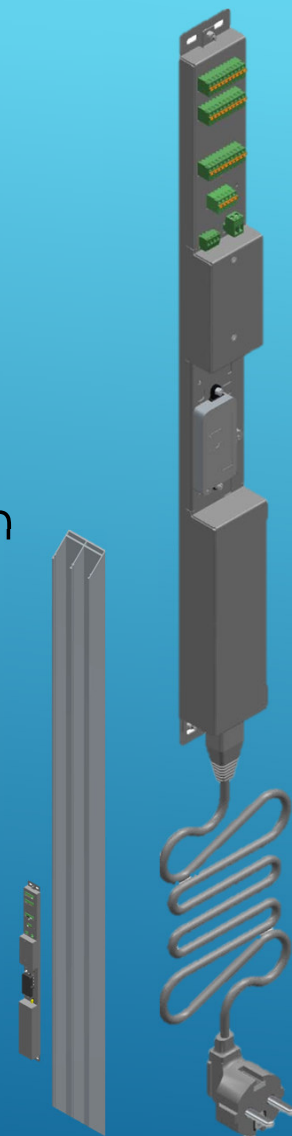
- Space requirement in the upper profile reduced
- Pulling force up to 180N
- Mechanical locking included
- Mechanics tested for a 30-year service life
- BLDC drive - door slides easily
- fits into a rail





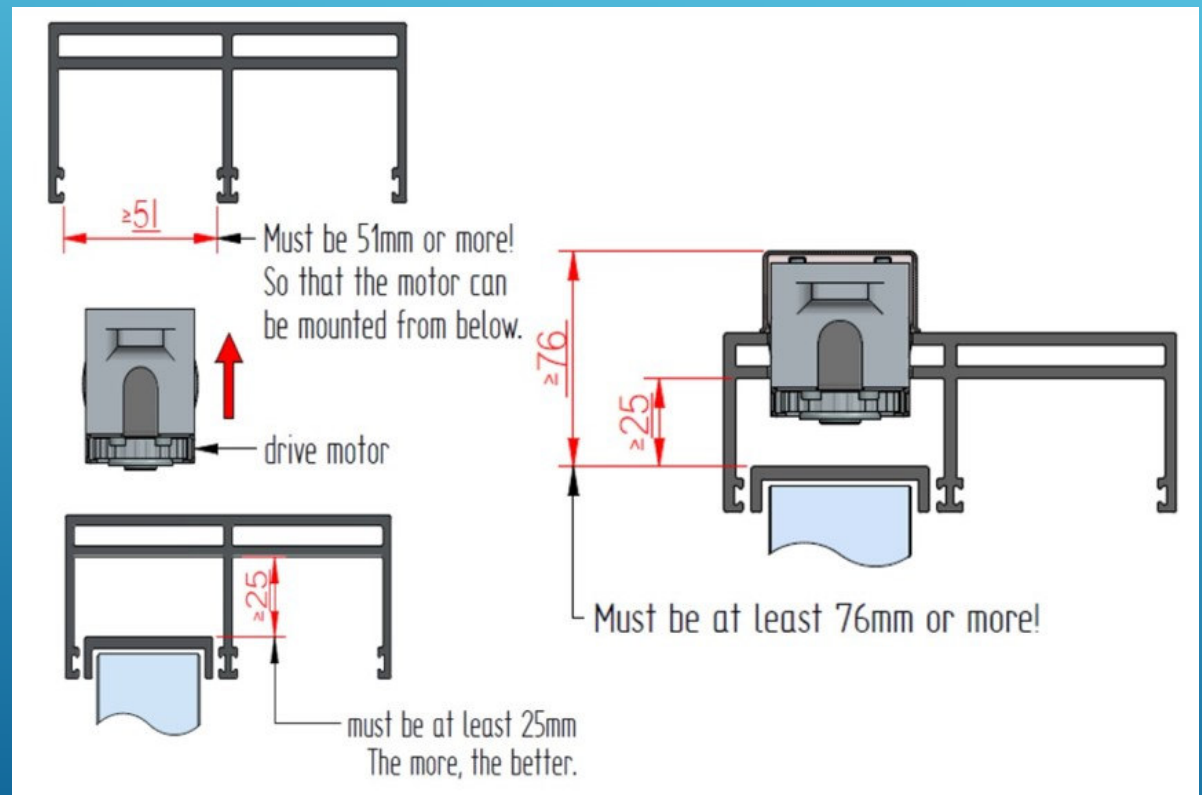
# New Product – Slim Line

- System with vertical toothed belt
- Newly developed V4 control unit
- available at market launch with our basic version
- ideal for single doors with fixed panel or pocket solution
- Can be used on the left and right
- Advantage for large quantities - stock keeping
- Attractive basic price
- Wifi and keypad integrated



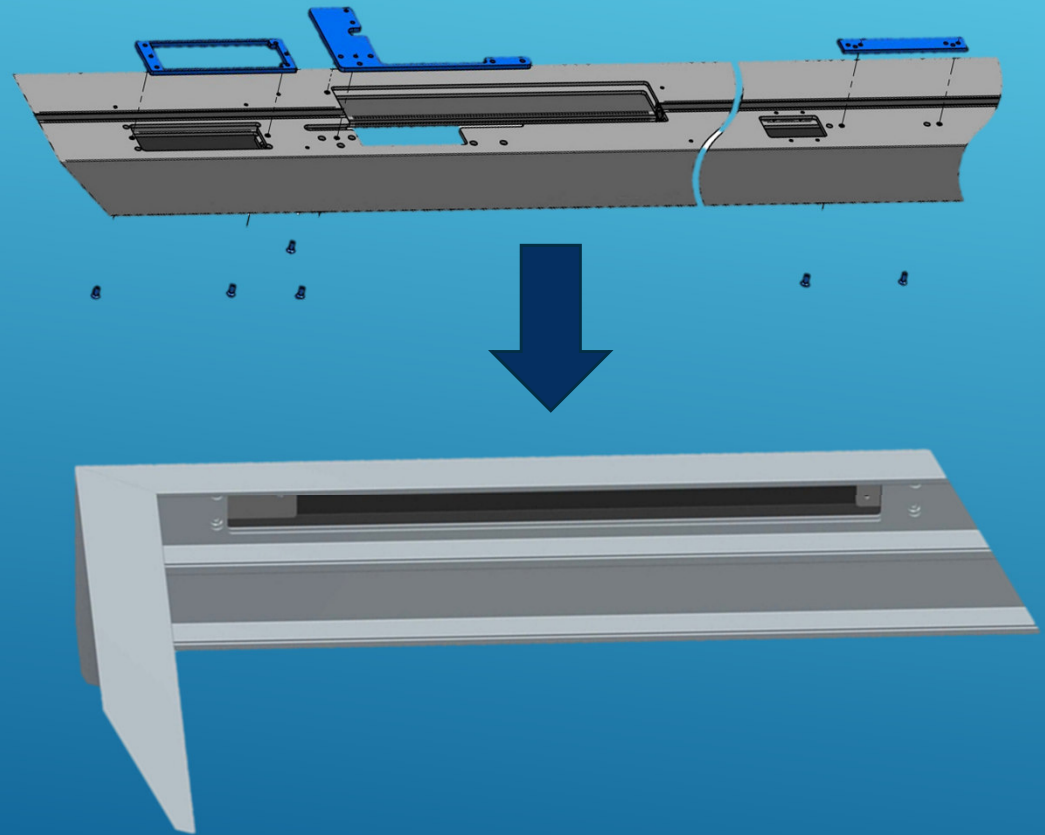
# Slim Line - space requirement

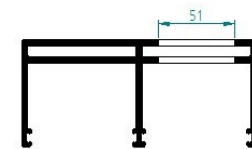
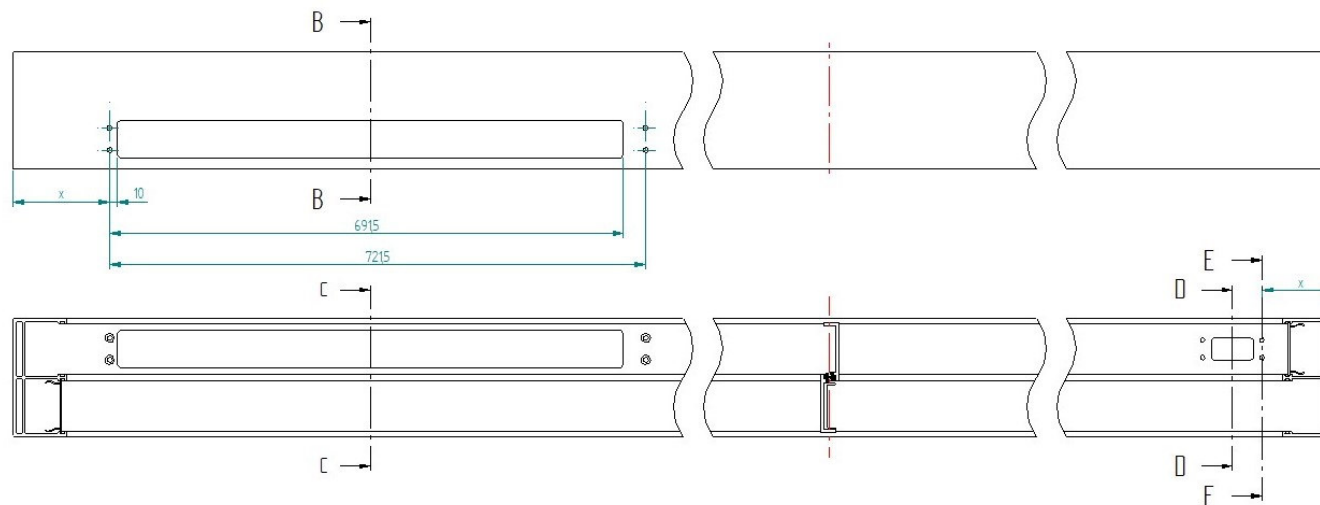
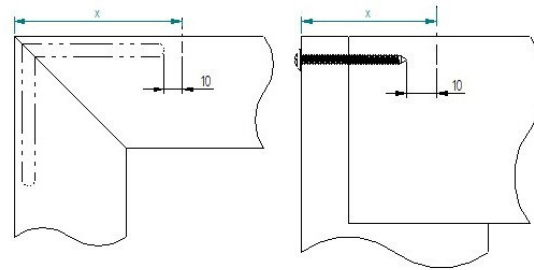
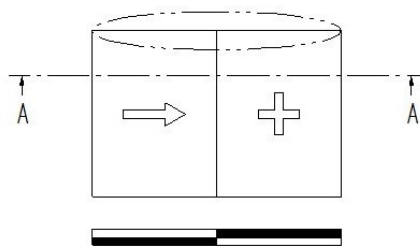
- Height
  - Space requirement from the top edge of the door leaf is reduced from 100 mm to 76 mm
- Width
  - Construction width decreases to 51 mm



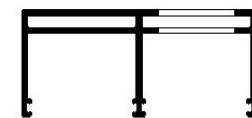
# Comparison milling and drillings

- Comparison to Liberda Classic Line
- Slim Line
- One milling for Drive and Lock instead of two

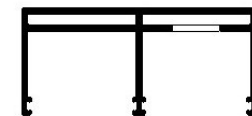




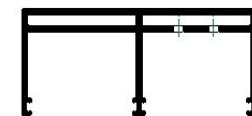
SECTION B-B



SECTION C-C

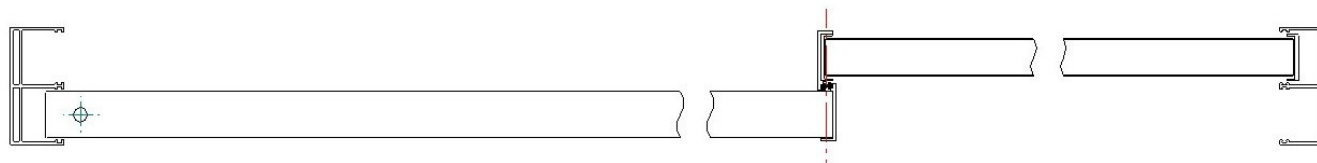


SECTION D-D



SECTION E-E

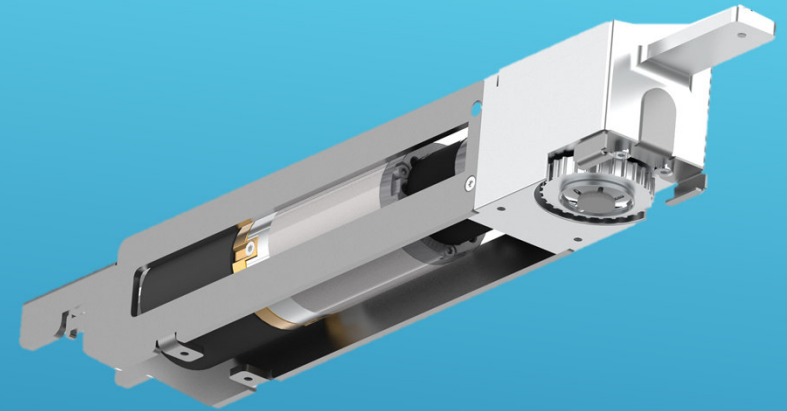
Machining required for installation





# BLDC - Gearmotor

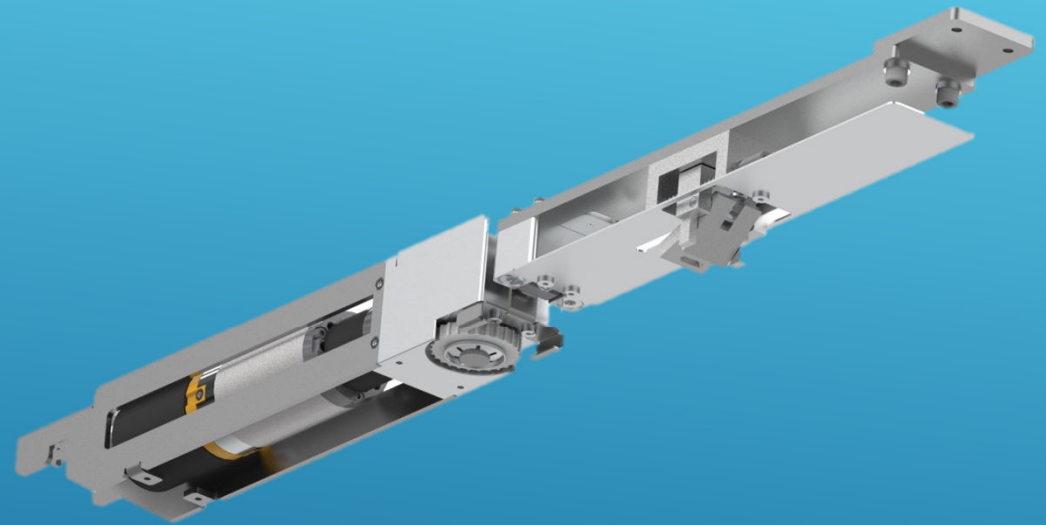
- Compact design
- higher power density
  - Slim Line 500 kg sash weight
  - Classic Line Size 1- 350 kg
- now push able with little strength
- pleasant noise emission
- modular design
  - Choose between different locking systems
    - magnetic
    - mechanical





# Mechanical Lock

- Pricing
  - Magnetic lock not required
  - Mechanical lock is always integrated in the unit
- “Locked” message
  - is sent to the control unit
- Emergency release
  - not required, can be unlocked by pulling on the belt

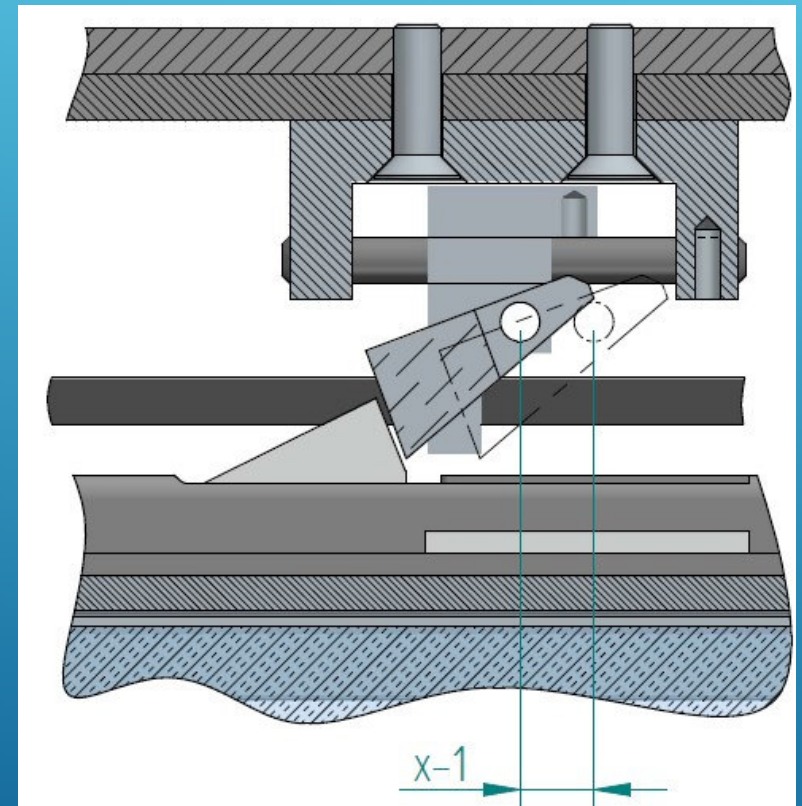






# Mechanical lock

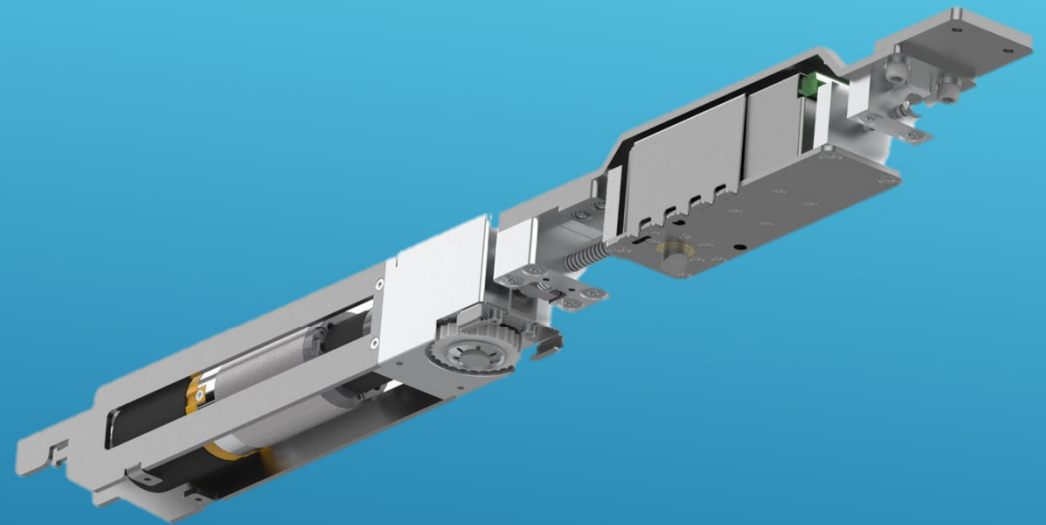
- Locking mechanism can be adjusted
  - Compensates for a longitudinal offset





# Magnetic lock

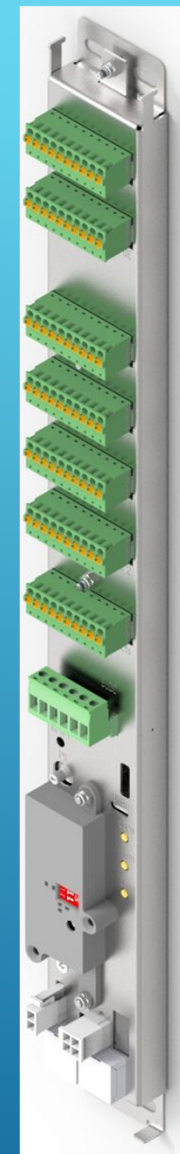
- Magnetic lock still available on request
  - May be necessary for external doors
- more favourable lock than before with same functions





# Connectivity

- Connectivity
  - as usual, you can still integrate external buttons, home automation or radio remote controls at **no extra cost**
- WIFI
  - our newly developed control system has Wi-Fi on board. This means you can connect your drives to your home network
- App for iOS and Android
- Remote Access
  - through the Wi-Fi interface we can also access your system if you grant us access and carry out troubleshooting or diagnostics

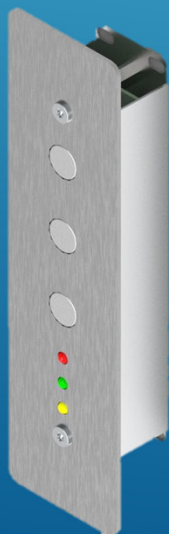




# Accessories

- We offer a wide range of accessories on request  
These include, for example:

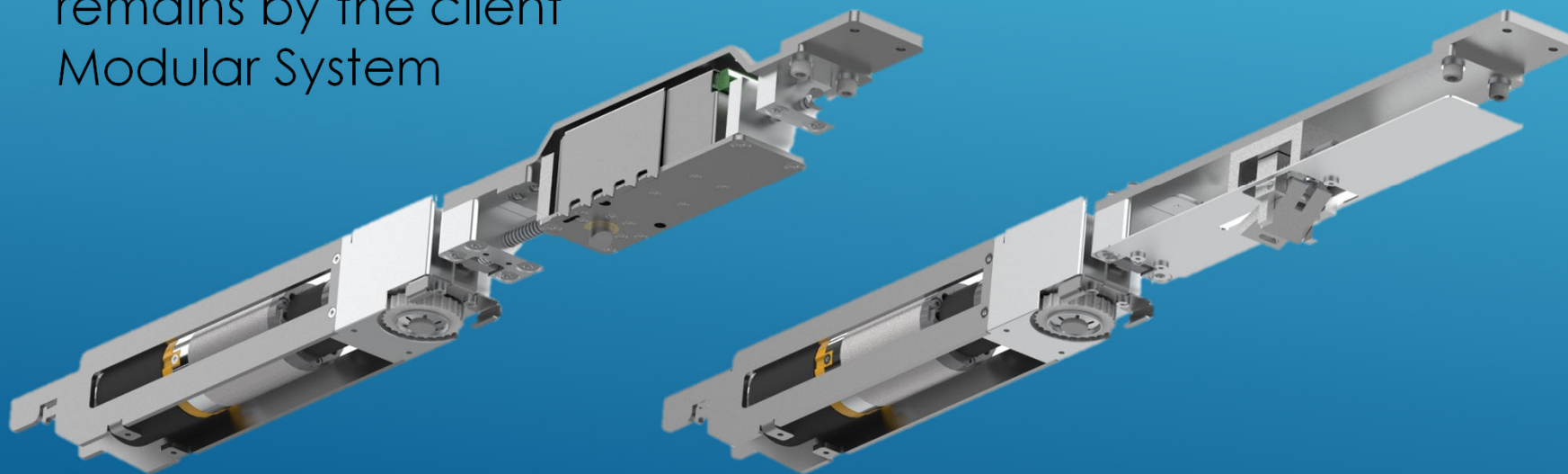
- Operating Elements
- Radio remote controls
- Control cabinets
- Uninterruptible power supplies
  - Mounted in the profile
  - Mounted in the control cabinet





# Competitive Advantages

- Extremely low overall height
- No additional profile required for stowing the drive
- No additional price for home automation module
- Remote diagnostics without workers on site full control remains by the client
- Modular System





# Contact Liberda

- Technical
  - [antriebe@liberda.eu](mailto:antriebe@liberda.eu)  
+4318953244
- Commercial
  - Liberda Sales Department
  - [sales@liberda.eu](mailto:sales@liberda.eu)
  - +43660676799





# Liberda Antriebstechnik

